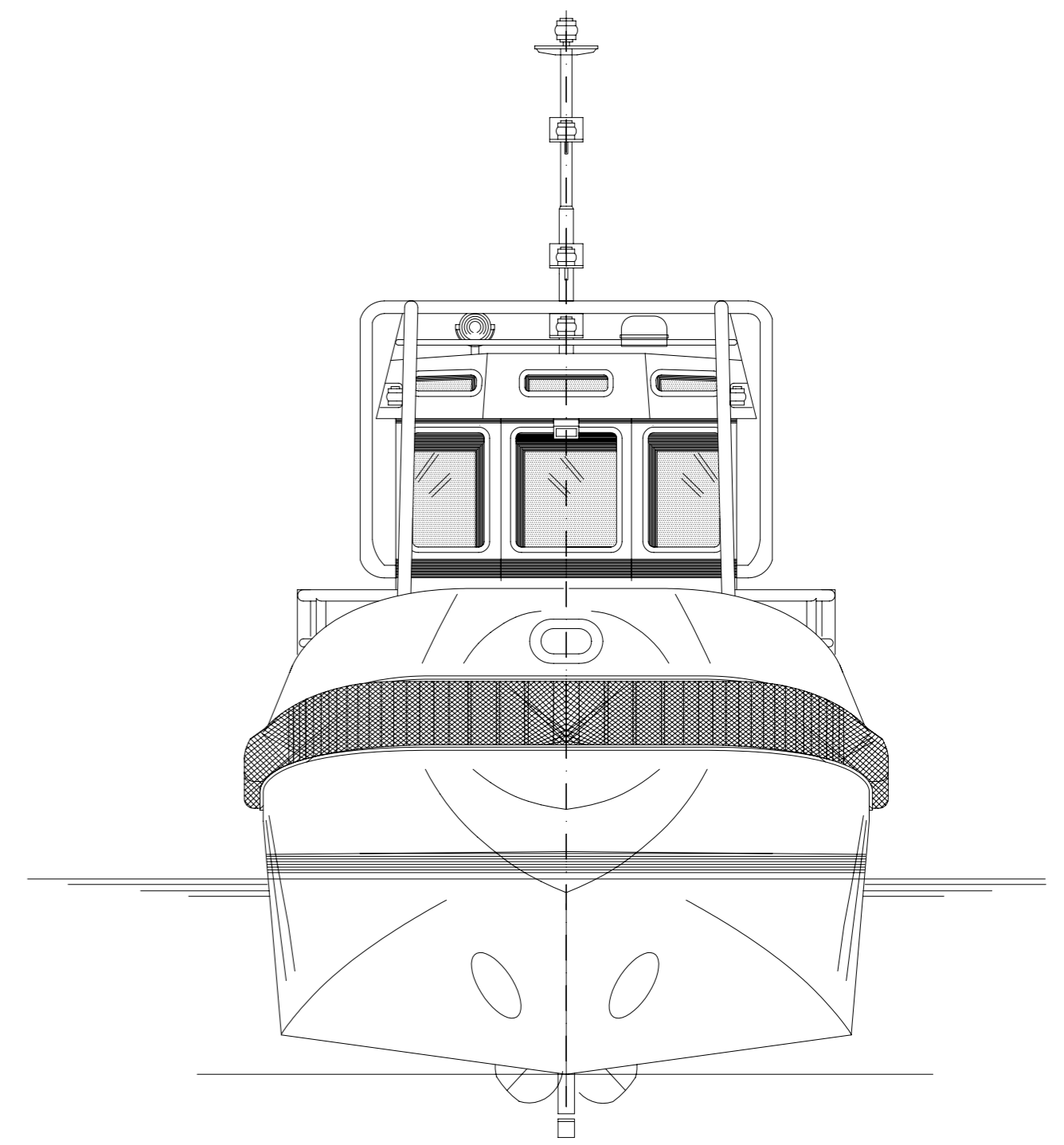
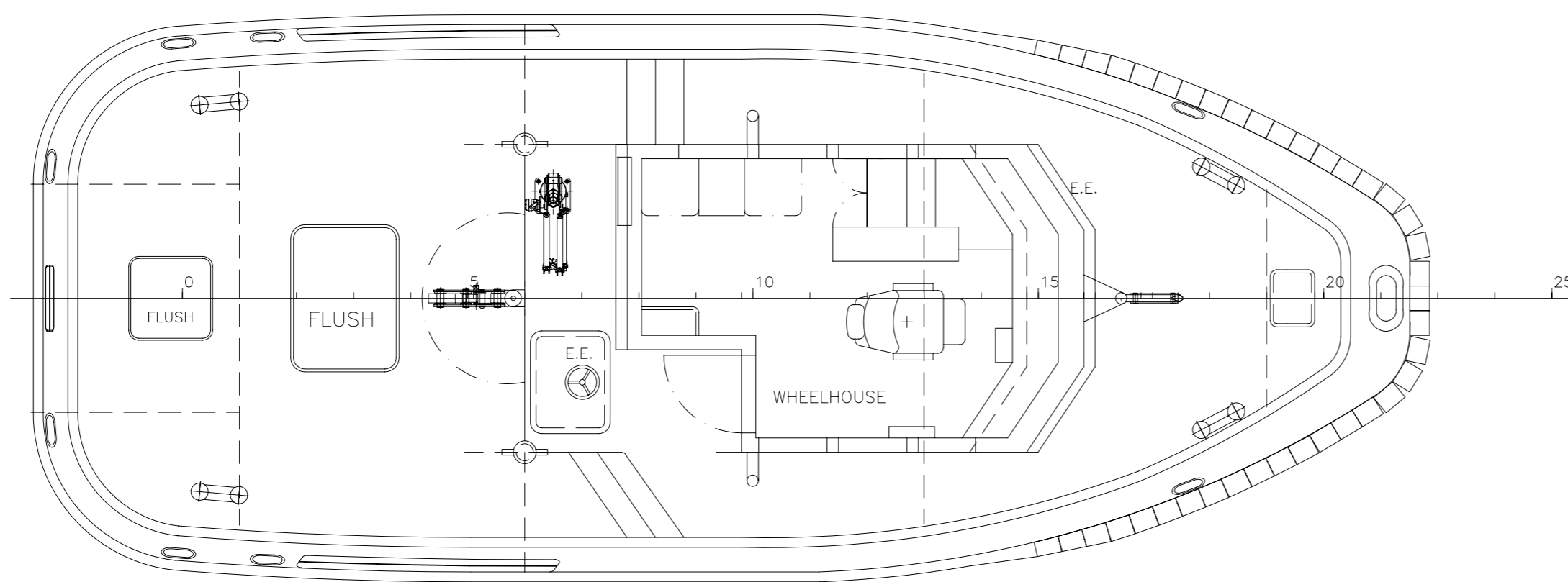


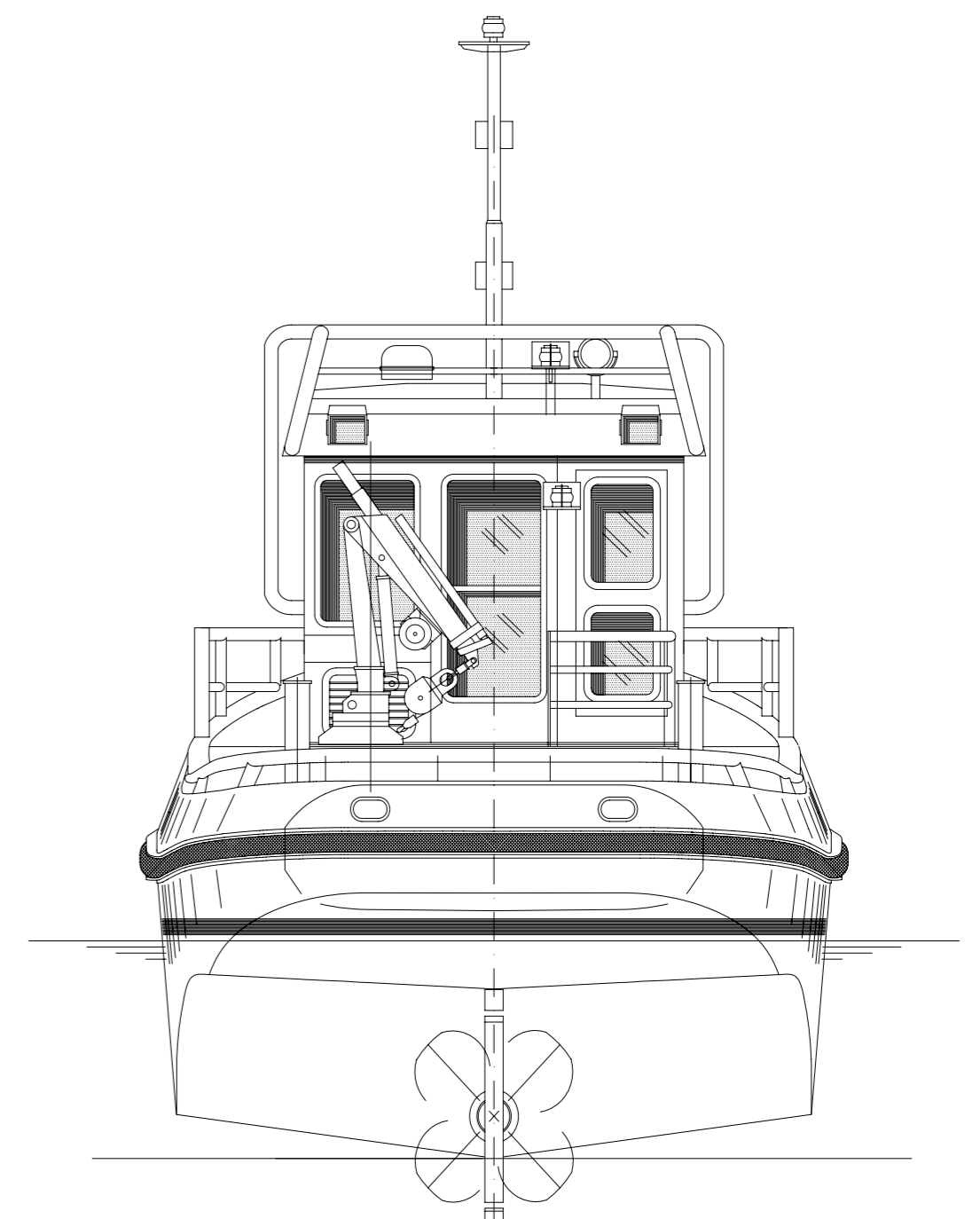
PROFILE



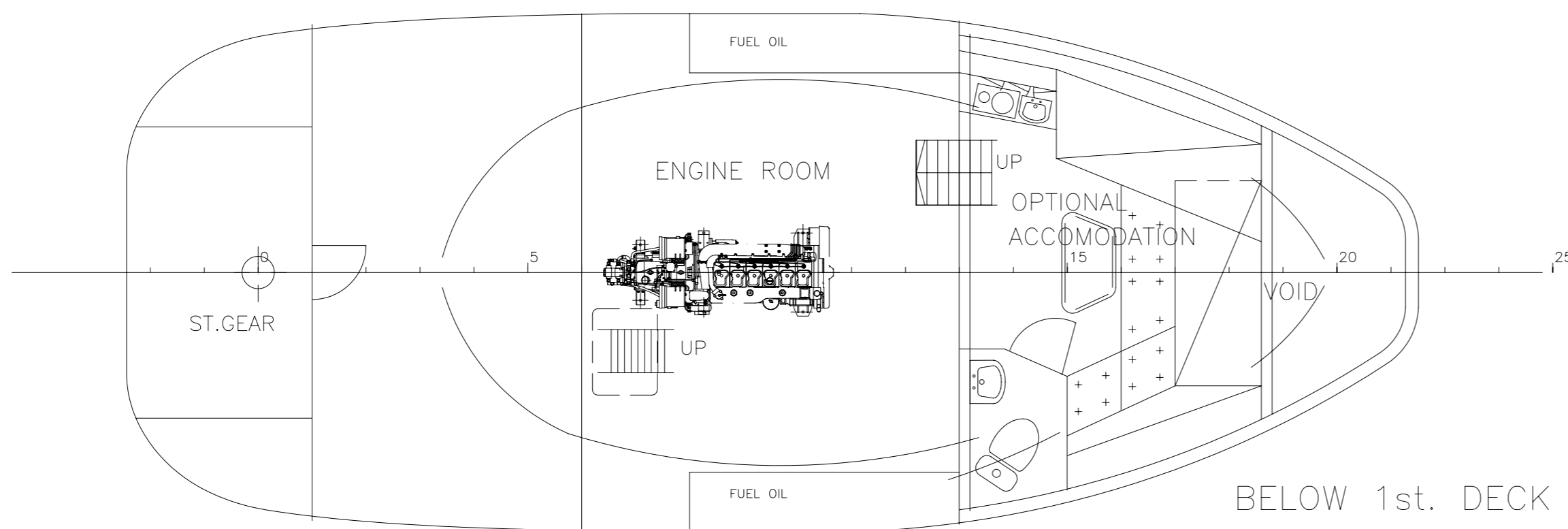
FRONT VIEW



1st. DECK



AFT VIEW



BELOW 1st. DECK

PRINCIPAL PARTICULARS

LENGTH OVER ALL: 12.00 m (excl. fenders)
 LENGTH BETWEEN PERP: 10.0 m
 BREADTH MOULDED: 4.80 m (excl. fenders)
 DEPTH MOULDED: 2.20 m
 FRAME SPACING: 0.50 m

Owner:
 Østensjø Rederi AS
 Postboks 394 5501 HAUGESUND

Sign.	Approved Class/Date	Approved Owner/Date	Appr. Authorities/Date	Approved/Date	Approved/Date	Checked V&S/Date
Date	12.00m HARBOUR SUPPORT VSL.					
Description	GENERAL ARRANGEMENT					
Rev.	SCALE	DATE	SFI	REV.		
1	1:50	2006.10.31	100	1		
2	FORMAT	DRAWN	R.R.	SHEET		
3	A1	READY FOR NC/ISO		1/1		
4	V&S PROJECT NO.			REV.		
5	3740			1		
6	DRAWING NO.			SHEET		
7	101-001			1/1		
8	ARCHIVE	3740-101-001.DWG	REPLACE	REPLY	INFO	

VIK • SANDVIK
 Member of the V&S-Sandvik Group

5419 FITJAR, NORWAY
 ☎ +47 53 45 70 00
 FAX +47 53 45 70 01
 VSD@vik-sandvik.com