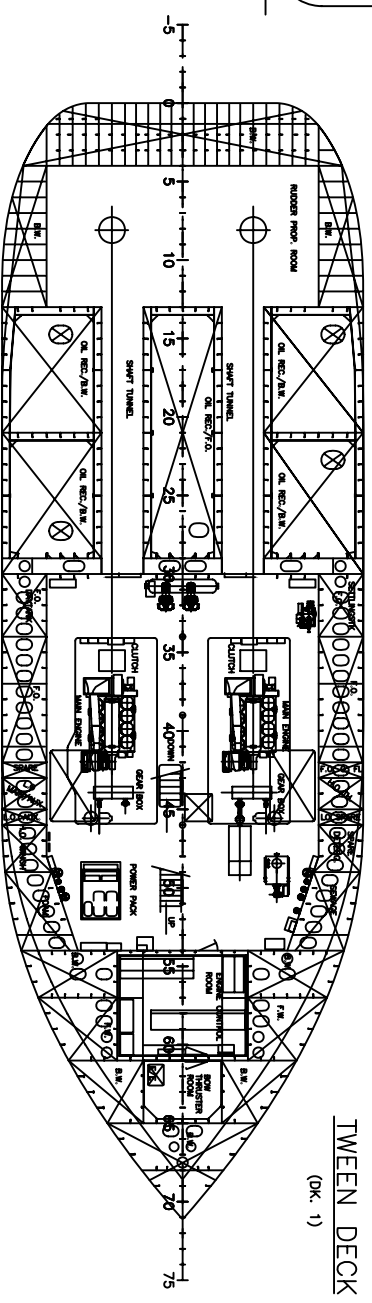
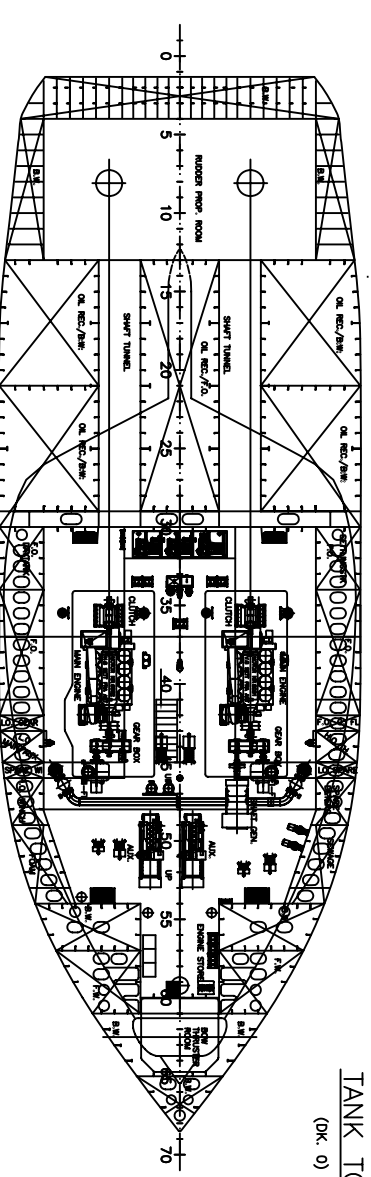


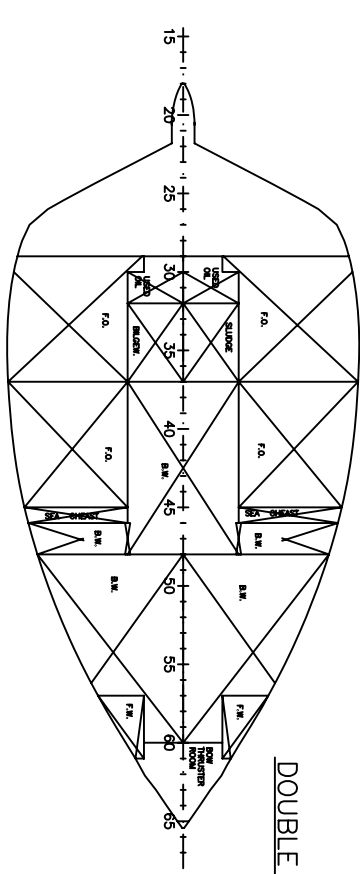
MAIN DECK  
(OK. 2)



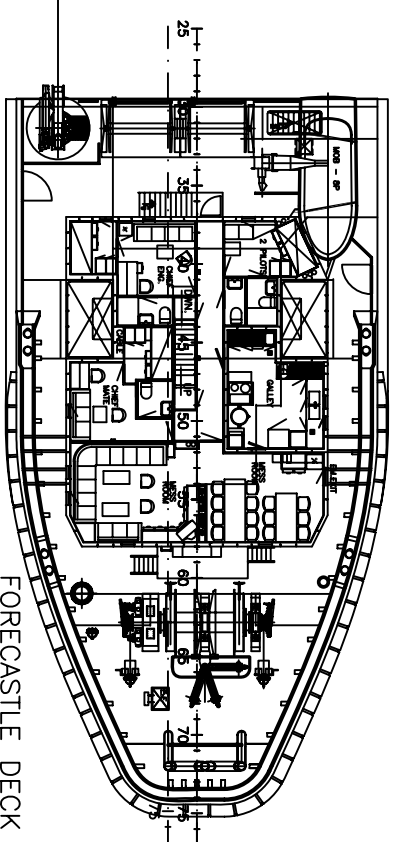
TWEEN DECK  
(OK. 1)



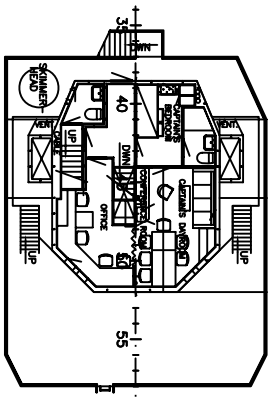
TANK TOP  
(OK. 0)



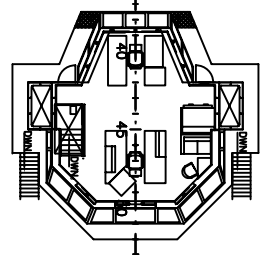
DOUBLE BOTTOM



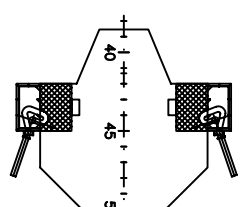
FORECASTLE DECK  
(DECK 3)



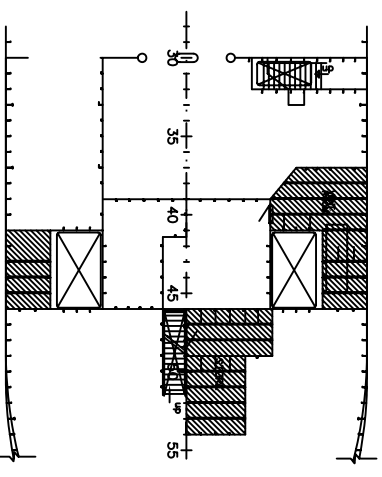
CAPTAIN'S DECK  
(DECK 4)



NAV. BRIDGE  
(DECK 5)



FI-FI PLATFORM  
(DECK 6)



INTERMEDIATE DECK  
(DECK 2.5)

- MAIN DIMENSIONS:
- LENGTH O.A. 45.48 M
  - LENGTH BETWEEN P.P. 41.12 M
  - BREADTH MOULDED 13.80 M
  - BREATH O.A. 14.63 M
  - DEPTH TO MAIN DECK 7.60 M
  - DEPTH TO FOREC. DECK 11.50 M
  - DRAUGHT TO LWL 5.80 M + 0.85M for Skeg
  - FRAME SPACING 600 MM

CLASS:  
DNV +1A1 TUG, EO OILREG, FI-FI I, SF

REV.	DATE	BY	CHKD	REVISION
A				CONNECTED
B				CONNECTED
C				CONNECTED
D				CONNECTED

GENERAL ARRANGEMENT COMPLETE

**THORAX**

12030 D

Rev.	Ending	Date
A	CONNECTED	18.11.92 KK
B	CONNECTED	7.12.92 KK
C	CONNECTED	12.1.92 KK
D	CONNECTED	26.2.93 KK

Corr.: Skeg, low towing point: 09.03.99.  
As: Fjelland